

IRON WORKS

SOUTH BOSTON

RETAIL REIMAGINED

1,325 SF + 5,200 SF OPPORTUNITIES



IRON WORKS

NEIGHBORHOOD

 **\$130,000**
average household income


 **35**
median age


 **61%**
under age 44

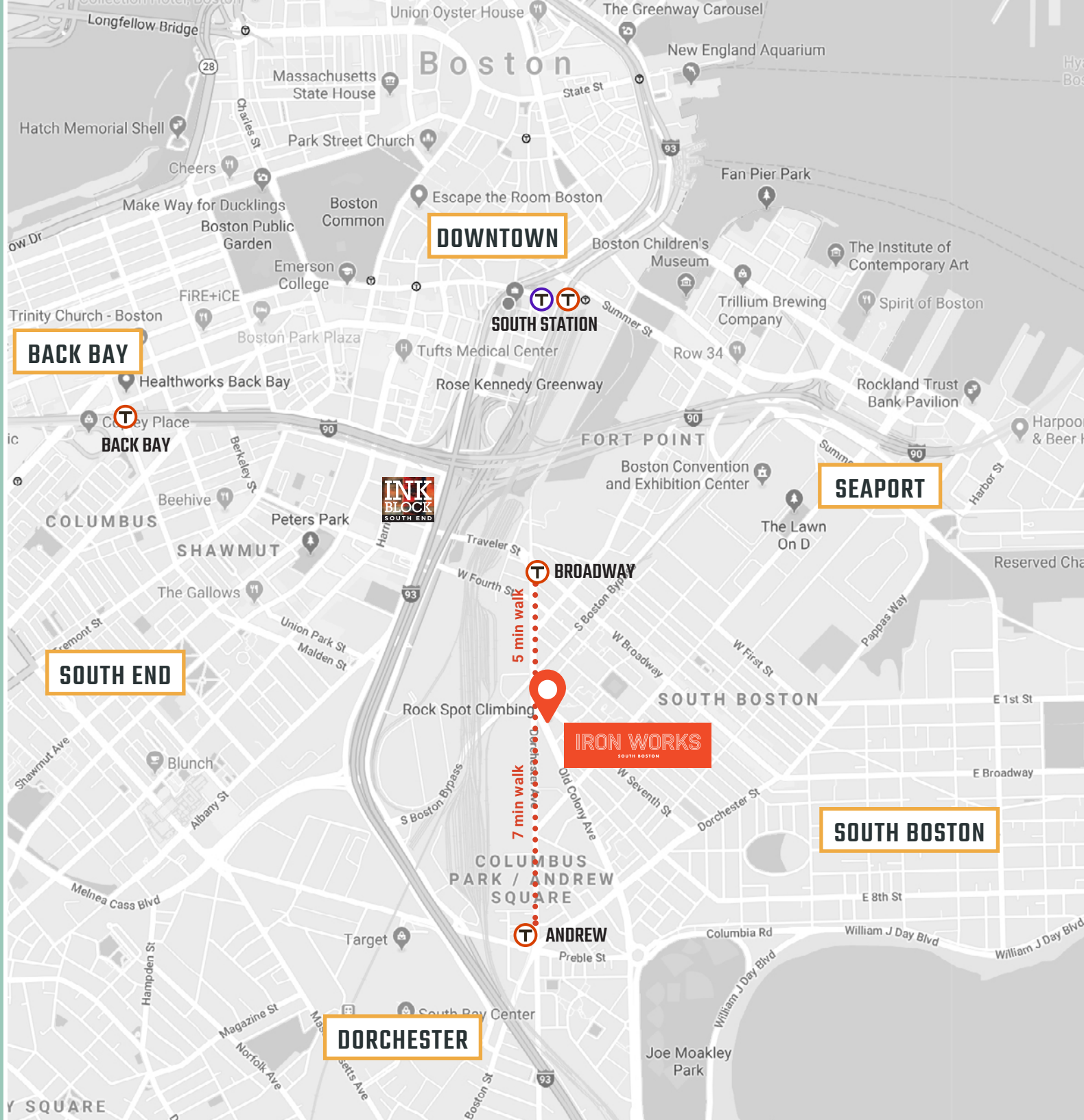
 **48%**
under age 34

 **40%**
population growth since 2000

 **85**
very walkable walk score

 **71**
transit score - 5-7 min walk to
Broadway and Andrew Stations

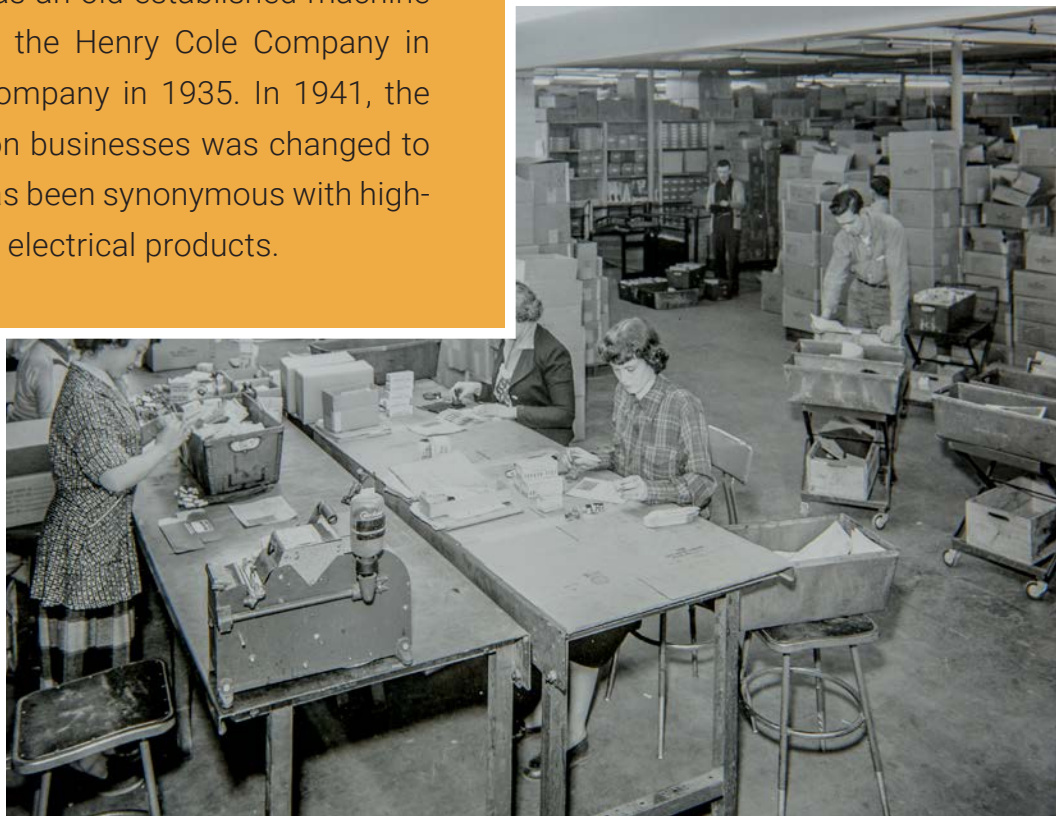
 **89**
bike score - 9 min ride downtown





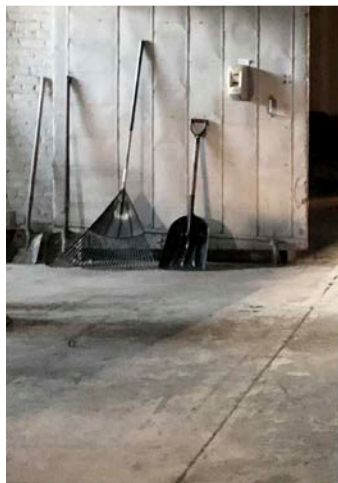
THE REAL DEAL

The Henry Cole Company of Boston was founded in 1914 as a manufacturer of lamp sockets and other equipment. The F.C. Hersee Company was an old-established machine shop. Leo Mayer purchased the Henry Cole Company in 1924 and the F.C. Hersee Company in 1935. In 1941, the name of these two old Boston businesses was changed to Cole Hersee Company and has been synonymous with high-quality automotive electrical products.





ANOTHER FINE PRODUCT
FROM
COLE-HERSEE
MANUFACTURERS OF
ORIGINAL AUTOMOTIVE EQUIPMENT



IRON WORKS

OPPORTUNITIES



75,000

total retail square footage



programmable outdoor space



8-10

total retail and restaurant shells



15-18'

average ceiling heights



parking

abundant on-site and on-street



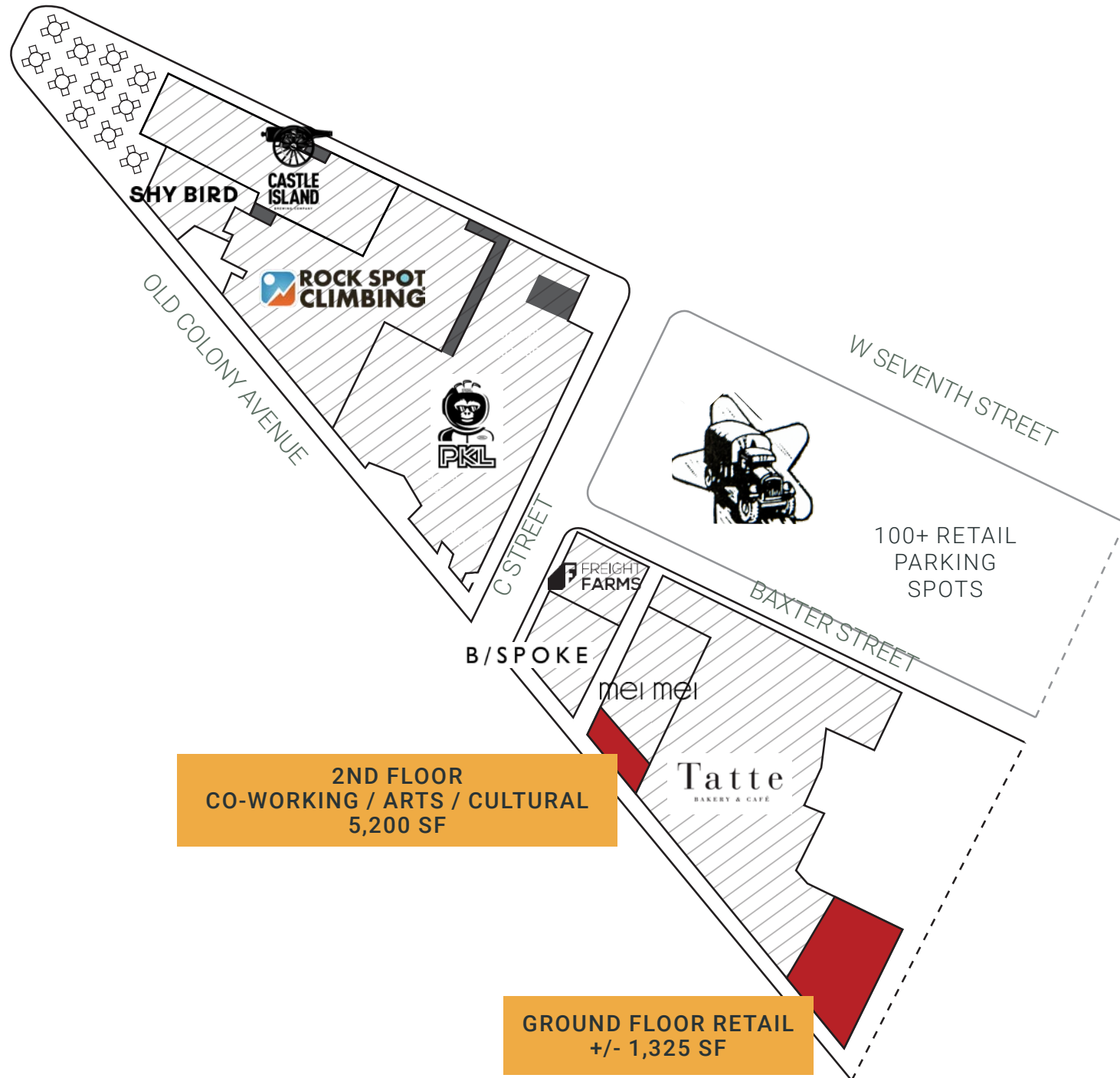
facades

and storefronts brand new



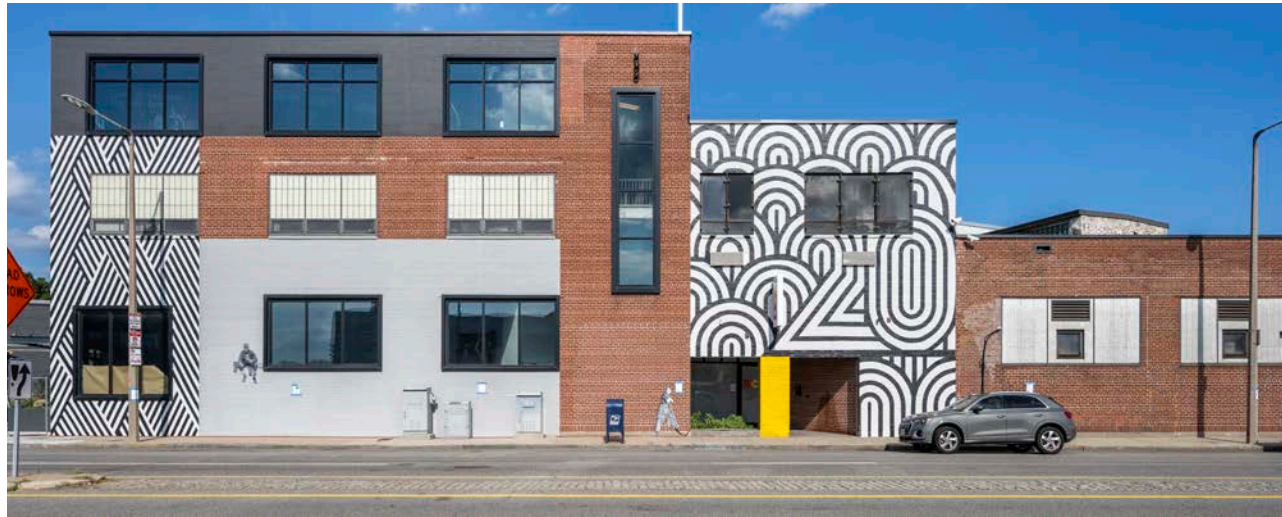
signage

and branding opportunities along Old Colony and Dot Ave



BUILT TO LAST

A distinctive opportunity to transform turn-of-the-century high-bay manufacturing space into a retail destination that honors its industrial roots but works for today's experiential retail vibe. Great bones (think incredible ceiling heights, industrial beams, exposed concrete), amazing transportation access and parking, and a location easily accessed from the heart of South Boston, South End and Seaport.





Prime storefront opportunity along Old Colony



GRAFFITO 

DAVE DOWNING
617.401.2871
DAVE@GRAFFITO.COM



TANIA CELESTIN
781.510.1307
TANIA@GRAFFITO.COM



 **NATIONAL**
DEVELOPMENT

LEAH HARSFIELD
617.559.5014
LHARSFIELD@NATDEV.COM



BAILEY AMENABAR
617.559.5087
BAMENABAR@NATDEV.COM

